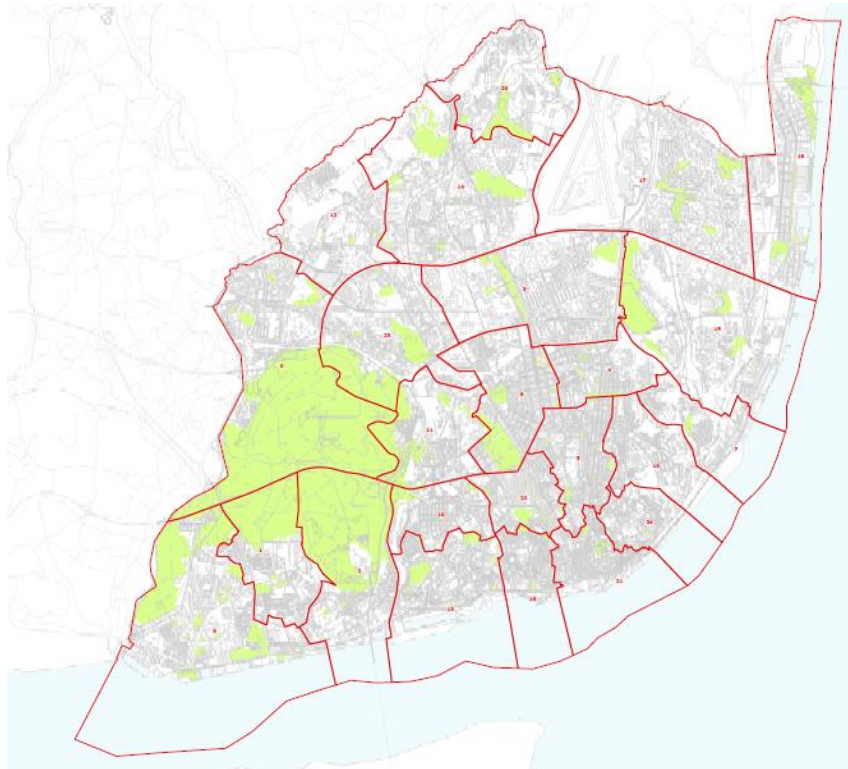


# PROJECT SEXUAL AND MORAL HARASSMENT IN THE WORKPLACE

STUDY TOUR TO PORTUGAL  
LISBON, 27-28 JANUARY 2015

# LISBON

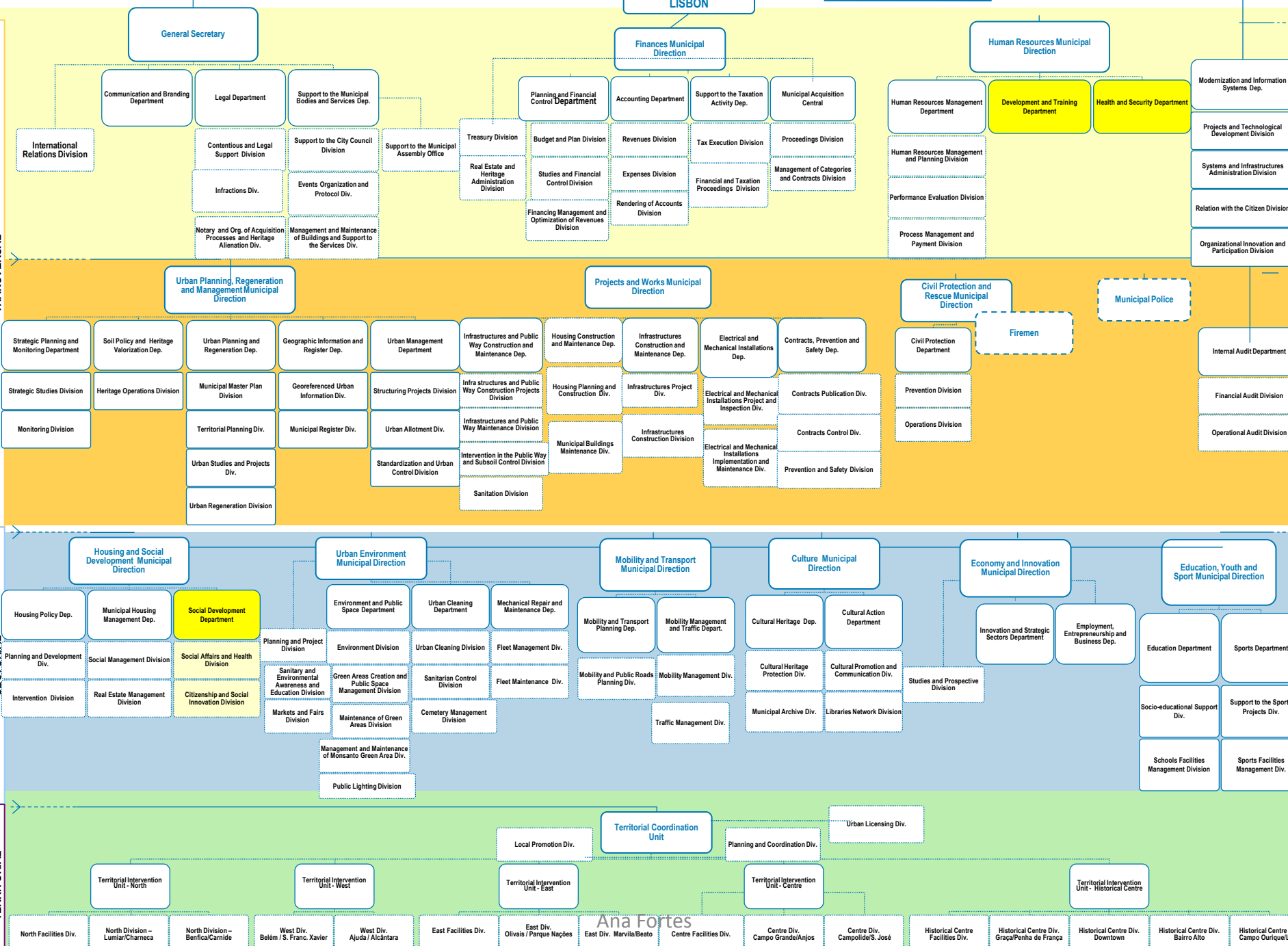


- 24 CIVIL PARISHES
- 84,9 Km<sup>2</sup>
- 547.733 (POPULATION LIVING IN THE CITY - 5,2% OF THE COUNTRY'S POPULATION)
- 425,747 (PEOPLE COMMUTING INTO LISBON )
- **925.959** (PEOPLE COMMUTING INTO THE CITY AND POPULATION LIVING IN LISBON)

TRANSVERSAL

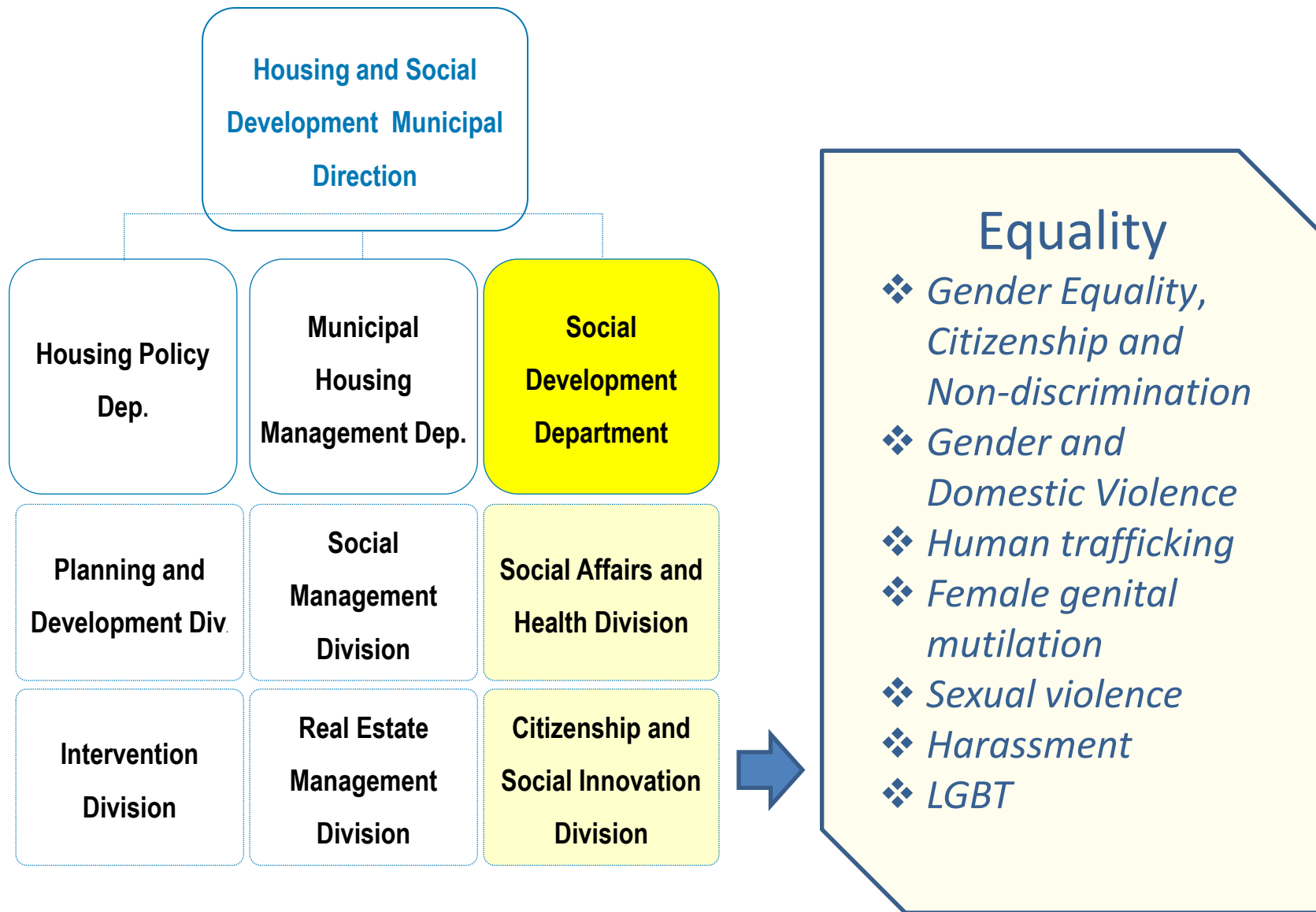
SECTORIAL

TERRITORIAL



# LISBON CITY COUNCIL

STAFF	
LEADING POSITIONS	151
SENIOR OFFICERS	2 186
TECHNICAL ASSISTANT	1 430
ASSISTANT OPERATIONS	2 397
OTHER POSITIONS	430
FIREMEN	779
MUNICIPAL POLICE	324
INDEPENDENT SERVICE PROVIDER CONTRACT	392
<b>TOTAL</b>	<b>8 089</b>



I, II

- Municipal Plan to Prevent and Combat Domestic Violence and Gender
- Domestic violence transitional housing program

III

- Financial and non-financial support to projects and activities from civil society entities

IV

- Municipal Committee for Equality

V

- Formal and informal partnerships in several projects from public and private entities (women trafficking; domestic violence; sexual violence; harassment)

VI

- Union of Ibero-American Capital Cities – Ibero- American cities network against trafficking for sexual exploitation

# HARASSMENT

SEXUAL HARASSMENT : BREAKING INVISIBILITIES, BUILDING A CULTURE OF PREVENTION AND INTERVENTION (*UMAR*)

SEXUAL AND MORAL HARASSMENT IN THE WORKPLACE (*CITE*)