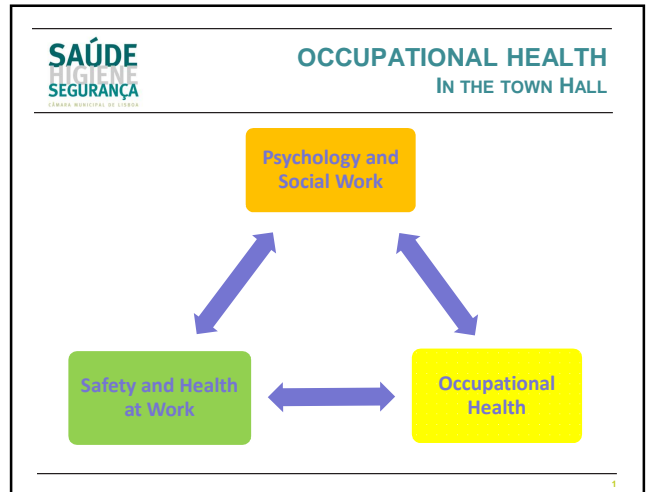


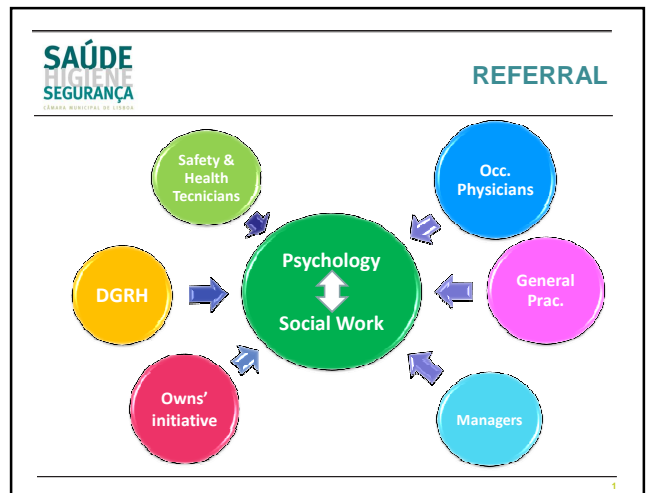
**SAÚDE HIGIENE SEGURANÇA** CÂMARA MUNICIPAL DE LISBOA

**OCCUPATIONAL HEALTH MISSION**

The Safety and Health Departments' (DSHS) mission is to ensure the application of measures in order to prevent occupational risks and promote safety, physical and mental health of all municipal workers.



- SAÚDE HIGIENE SEGURANÇA** CÂMARA MUNICIPAL DE LISBOA
- OUR INTERVENTION**
- ✓ Mental Health Prevention;
  - ✓ Psychological and Social support.

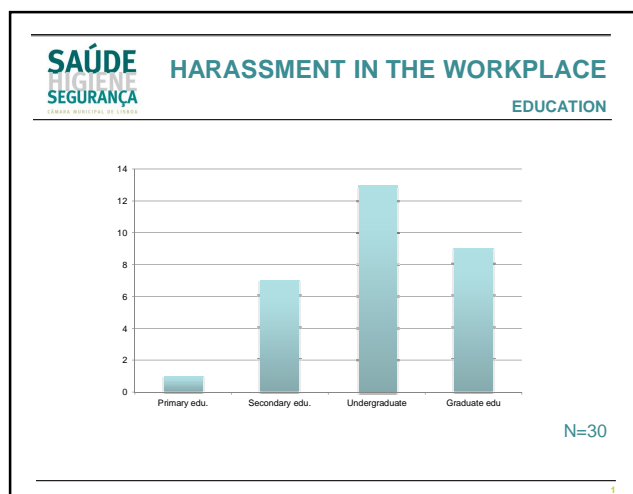
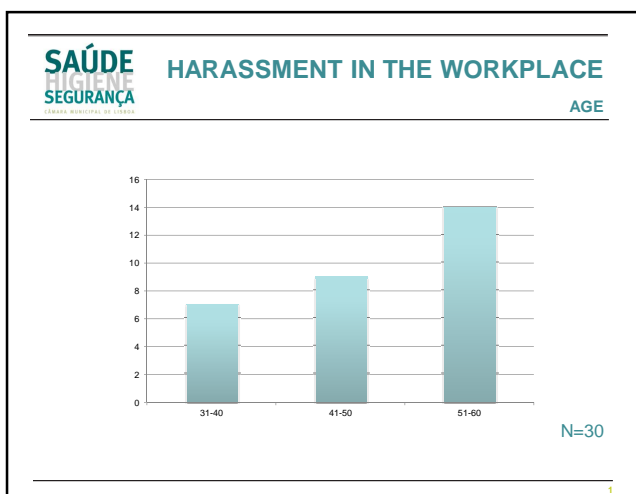
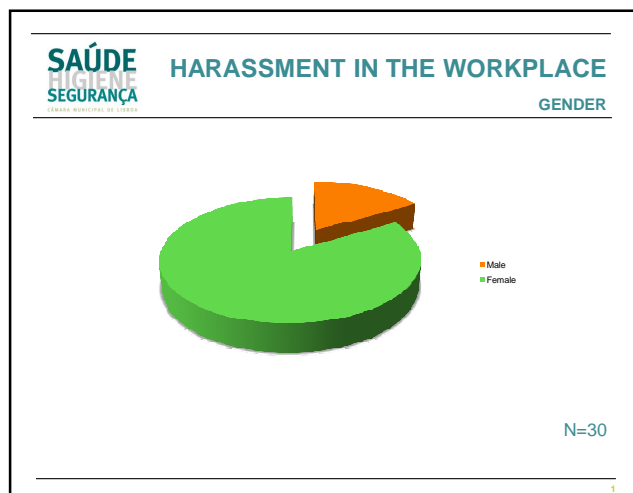
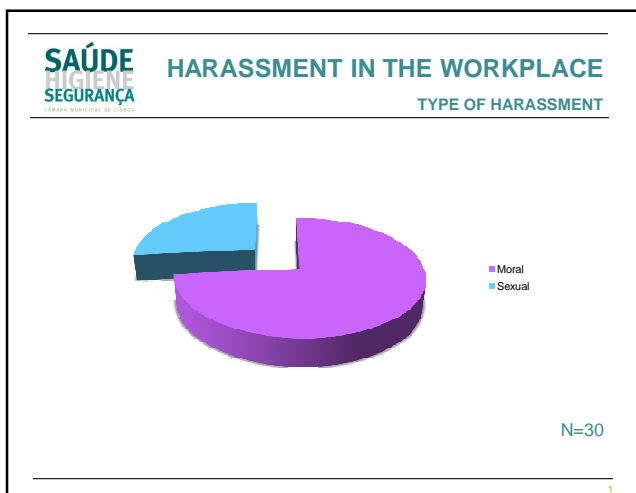
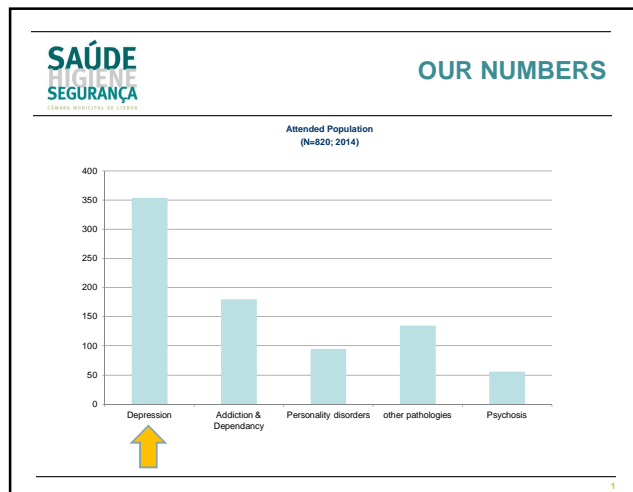


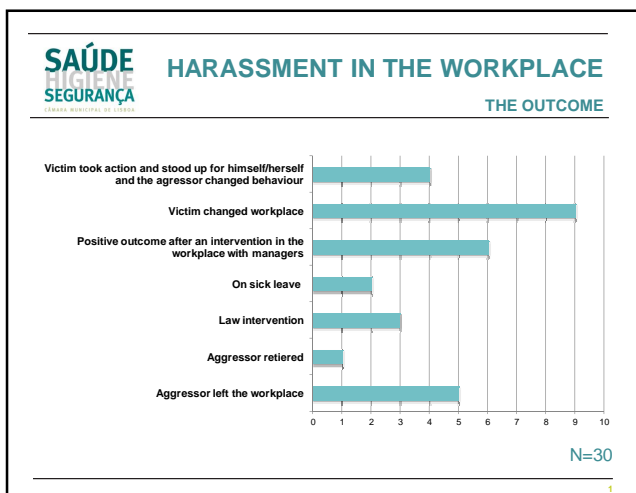
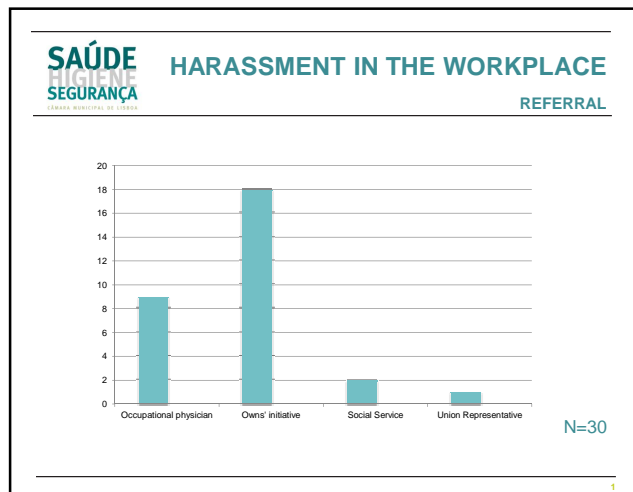
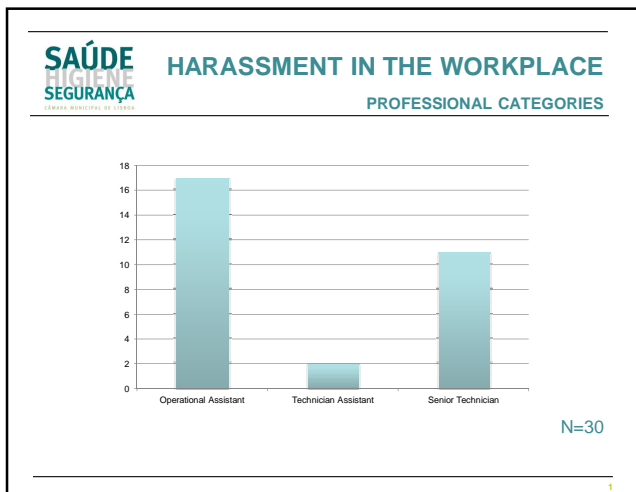
**SAÚDE SEGURANÇA** PSYCHOLOGY & SOCIAL CARE

Is available to all municipal workers of the City Hall (CML).

Workers attend these specialities during working hours free of charge.

They aim to detect mental health illness, promote mental health and wellbeing, help to deal with work-related problems, improve the adaptation /job placement and thus improve the quality of life of the worker.





**SAÚDE**  
HIGIENE  
SEGURANÇA

### HARASSMENT IN THE WORKPLACE

TO DO'S IN THE NEAR FUTURE

- Enhance articulation between the different parties that are responsible for the health and wellbeing of the workers (such as occupational health, human resources, law department) and union representatives responsible for the dignity and health in the workplace;
- Prepare a bullying policy and complaint procedures in order to implement good practice principles;
- Invest on moral and sexual awareness – Top, intermediate managers and workers.

**TUSEN TAKK !**  
Thank you !